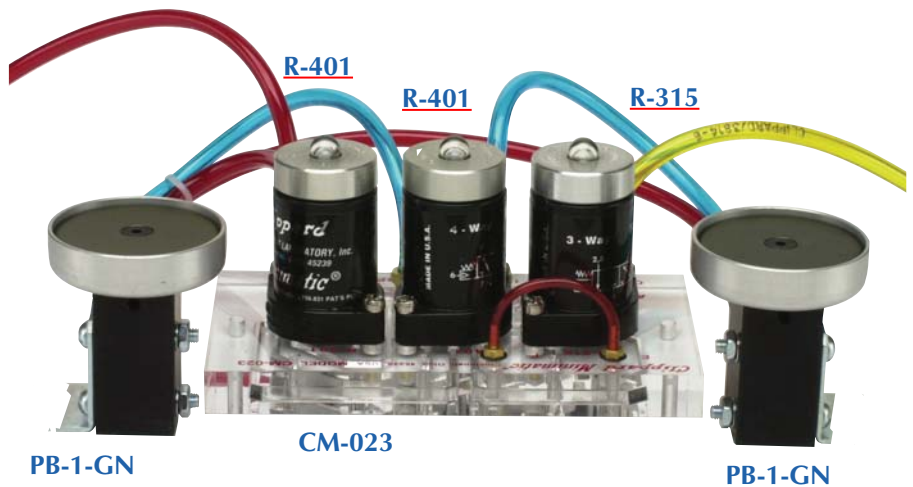


STANDARD PNEUMATIC CIRCUIT BOARDS

TWO HAND NO TIE DOWN



The Clippard Minimatic® CM-023 pneumatic circuit board is a self-contained modular circuit board with all interconnections needed to provide a two hand no tie down (THNTD) pneumatic circuit. The board is designed to be used with three Clippard modular plug-in control valves and to eliminate the piping time and materials normally associated with circuitry. Use of the CM-023 will assure simple and rapid installation of your two hand no tie down circuit.



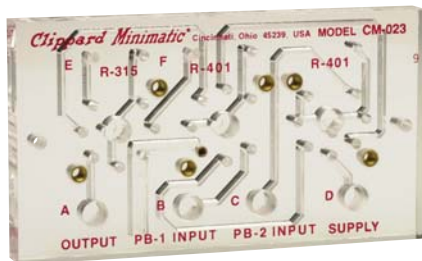
The CM-023 THNTD control circuit requires two separate input signals that must be received approximately at the same instant before an output signal is obtained. Both input signals must be spontaneous and neither can be "tied down" or made constant. The main function of this control is to require a machine operator to use both hands to actuate the machinery, helping to insure that the operators hands are not in a position to be injured by the machine as it is actuated. When used with the Clippard PB guarded palm button valves which have been properly positioned and mounted, the CM-023 THNTD control will provide an output to actuate machinery only when the operator pushes each button simultaneously.

The growing emphasis on employee safety and governmental regulations requiring safe work conditions have encouraged the widespread use of two hand no tie down controls to protect workers from injury. Numerous types of THNTD controls have been introduced to the market. Many are cumbersome, bulky and expensive. The Clippard Minimatic THNTD package offers ease of installation and maintenance in a compact size.

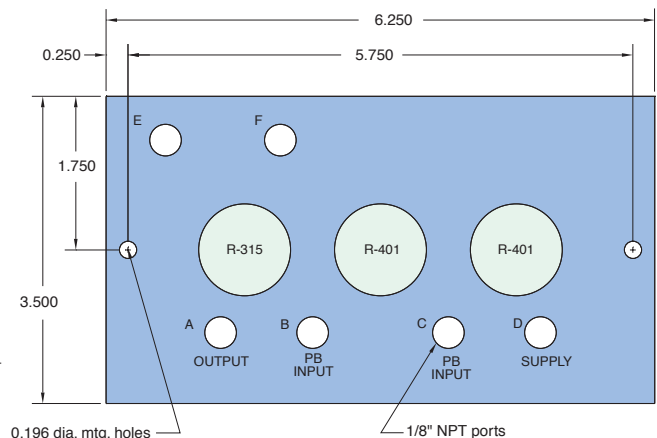
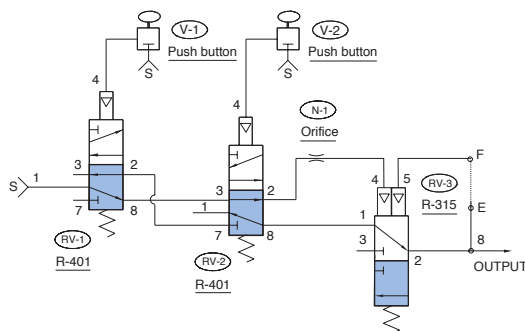
CM-023

Circuit Board for 2 R-401 and 1 R-315 Valve
Warning: See instructions shipped with product

Size: 6 1/4" x 3 1/2" x 9/16" thick - 3 modules



CM-023



Use: Clippard's Minimatic® CM-023 and CM-023-PQ circuit boards are self-contained modular circuit boards with all interconnections needed to provide a Two Hand No Tie Down (THNTD) pneumatic circuit. Use of the CM-023 or CM-023-PQ will assure simple and rapid installation of your two hand no tie down circuit.